



Nature Protection in Latvia

Kristīne Galauska

Nature Protection Board

+371 7509767, kristine.galauska@dap.gov.lv



Ministry of Environment		
Sub-ordinate	Supervision	Management
Latvian Environmental Agency	State Geological Service	State Enterprise "Vides Prjekti"
Administration of Latvian Environmental Protection Fund	Norh Vidzeme Biosphere Reserve Administration	Latvian Environmental Investment Fund
Regional Environmental Boards	State Environmental Impact Assessment Bureau	State Enterprise "RAPA"
Marine Environmental Board	Gauja National Park Administration	State Enterprise "Getlini EKO"
Slitere National Park Administration	Radiation Safety Centre	
Teici National Park Administration	Environment State Inspectorate	
Kemeru National Park Administration	Latvian Hydrometeorological Agency	
Nature Protection Board	Latvian Nature Museum	





**Nature Protection Board
implements state policy in nature
protection and natural resources
management**





The main functions of the Nature Protection Board are (1):

- ☞ to ensure management of specially protected nature areas, which do not have their own administration;
- ☞ to inform public on nature protection and management of specially protected nature areas;





The main functions of the Nature Protection Board are (2):

- 🖱️ to take part in establishing a network of Natura 2000 sites in Latvia;
- 🖱️ to evaluate proposals for establishing microreserves (except sea and forest areas);
- 🖱️ to issue permits for obtaining of non-game species;





The main functions of the Nature Protection Board are (3):

- to fulfil functions of Management Authority of Convention on International Trade in Endangered species of wild Fauna and Flora (CITES) including issuing of CITES permits;
- to organize the development of the management plans for protected territories and species



SPNT (633)

- ✓ 4 Strict Nature Reserves
- ✓ 3 National Parks
- ✓ 43 Nature parks
- ✓ 1 Biosphere Reserve
- ✓ 278 Nature Reserves
- ✓ 9 Protected Landscape Areas
- ✓ Nature Monuments:
(*206 geological and geomorphologic nature monuments, 89 dendrological plantations*)

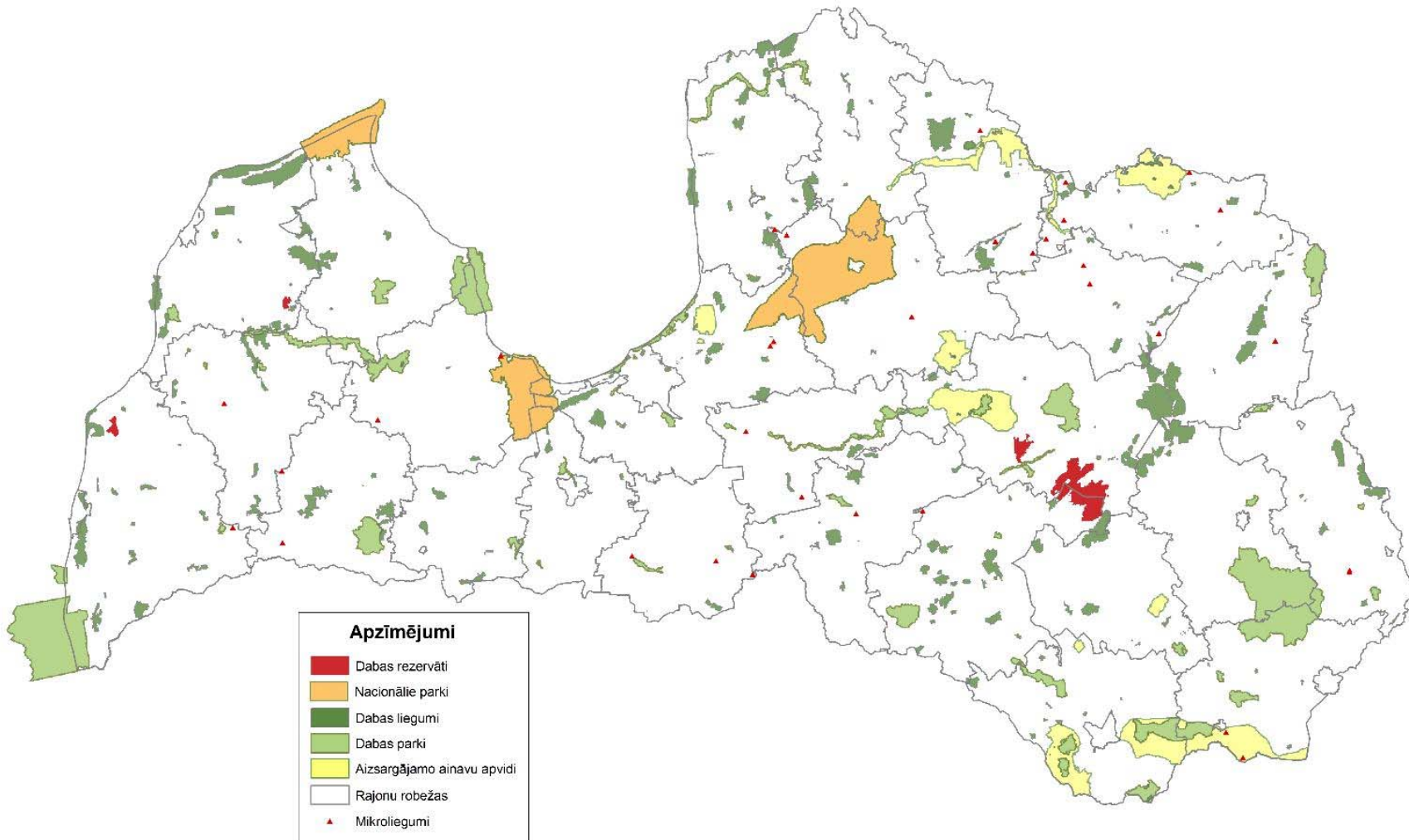
NATURA 2000 (336)

- ✓ 4 Strict Nature Reserves
- ✓ 3 National Parks
- ✓ 38 Nature parks
- ✓ 250 Nature Reserves
- ✓ 9 Protected Landscape Areas
- ✓ 9 Nature Monuments
- ✓ 23 Microreserves



Latvia: 336 NATURA 2000 sites

Natura 2000 teritorijas



Habitats and species mentioned in EU Habitats and Birds Directives

- 60 types of habitats
- 22 plant species
- 120 animal species (5 mammals, 70 birds, 3 reptiles and amphibians, 11 fish species, 20 invertebrates)





Management of SPNT and Natura 2000

Content of Management plans

- ✓ Main part: Legal aspects, Hydrology, Geology, Species and habitats, Social aspects, Goals for area management, Main activities (management, tourism infrastructure, information, governance)
- ✓ Annexes: Maps (species and habitats, administrative zones, management activities, topography, another), Lists of species, information about landowners, another
- ✓ The Regulations on Individual Protection and Use of Territory





Management of SPNT and Natura 2000

Management plans in numbers

- Prepared in 1-2 years
- For 5-15 years period
- 50 to 100 pages (without annexes)

Public involvement

- Informative meeting
- Steering committee meetings (at least 2)
- Public hearing
- Steering committee meeting



Management of SPNT and Natura 2000

Management activities

- ✓ Cutting of shrubs and grass
- ✓ Pasture by sheeps, cows, horses
- ✓ Trails
- ✓ Bird towers
- ✓ signs



A photograph of several yellow maple leaves scattered on a white, snowy surface. The leaves are in various stages of decay, with some showing brown spots and others appearing more vibrant. The background is a soft, out-of-focus white snow.

Thank you!

Nature Protection Board
2004